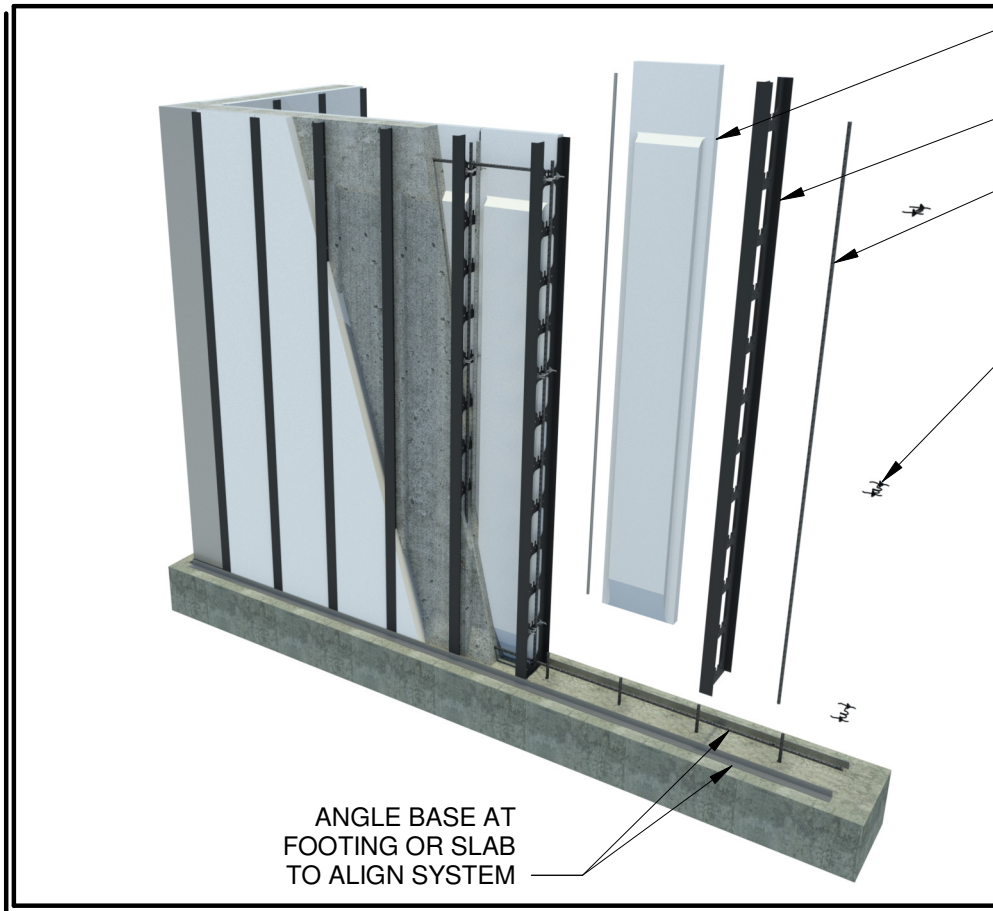


CONTOUR WALL W/ EXPOSED STUD DESIGN DETAILS



Vertical ICF Wall System

Go Engineered. Go Easy. Go Green.



HOBBS VICF CONTOUR WALL
EPS PANEL TYPE

FURRING ASSEMBLIES
(PVC STUDS)

VERTICAL BAR

CONTINUOUS CONCRETE
TOP BEAM

RETAINER CLIPS HOLD EPS
PANELS AND VERTICAL REBAR

HORIZONTAL REBAR
AT TOP BEAM

FURRING ASSEMBLY
(PVC STUDS)

MODIFIED POST
AND BEAM
STRUCTURAL
CORE DESIGN

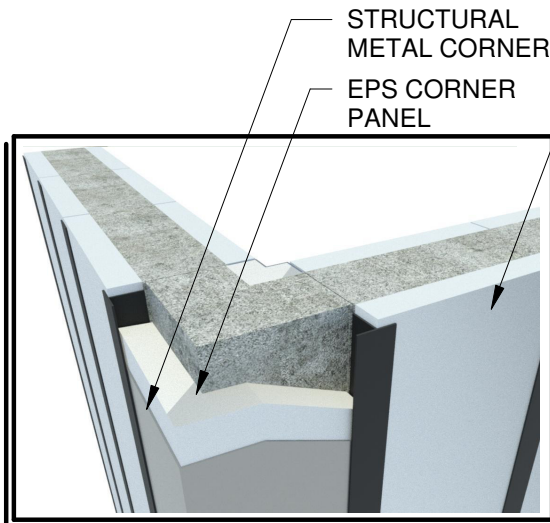
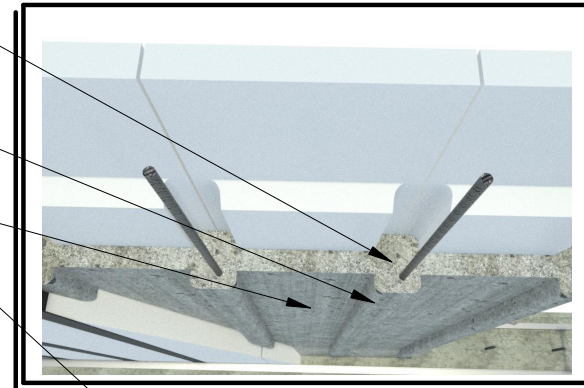
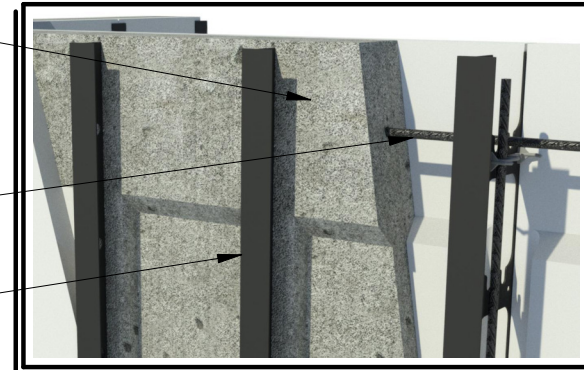
CONCRETE COLUMN
AT 16" O.C. SPACING
WITH VERTICAL REBAR

CONCRETE WEB

REBAR DOWELS

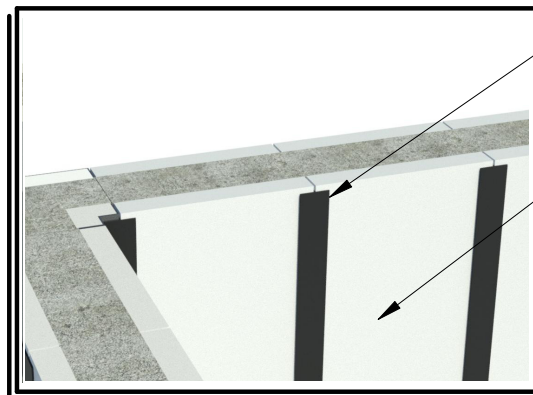
TAPERED BOTTOM
BEAM

ANGLE BASE AT
FOOTING OR SLAB
TO ALIGN SYSTEM



STRUCTURAL
METAL CORNER
EPS CORNER
PANEL

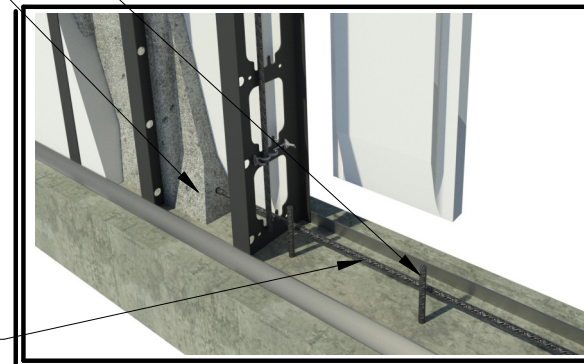
CONTOUR WALL
DESIGN W/ EXPOSED
STUD PANEL TYPE
@ 16" O.C. SPACING



EXPOSED FURRING
ASSEMBLIES
(PVC STUDS)
16" O.C. SPACING

CONTOUR WALL
DESIGN W/ EXPOSED
STUD PANEL TYPE
@ 16" O.C. SPACING

HORIZONTAL REBAR
AT BOTTOM BEAM

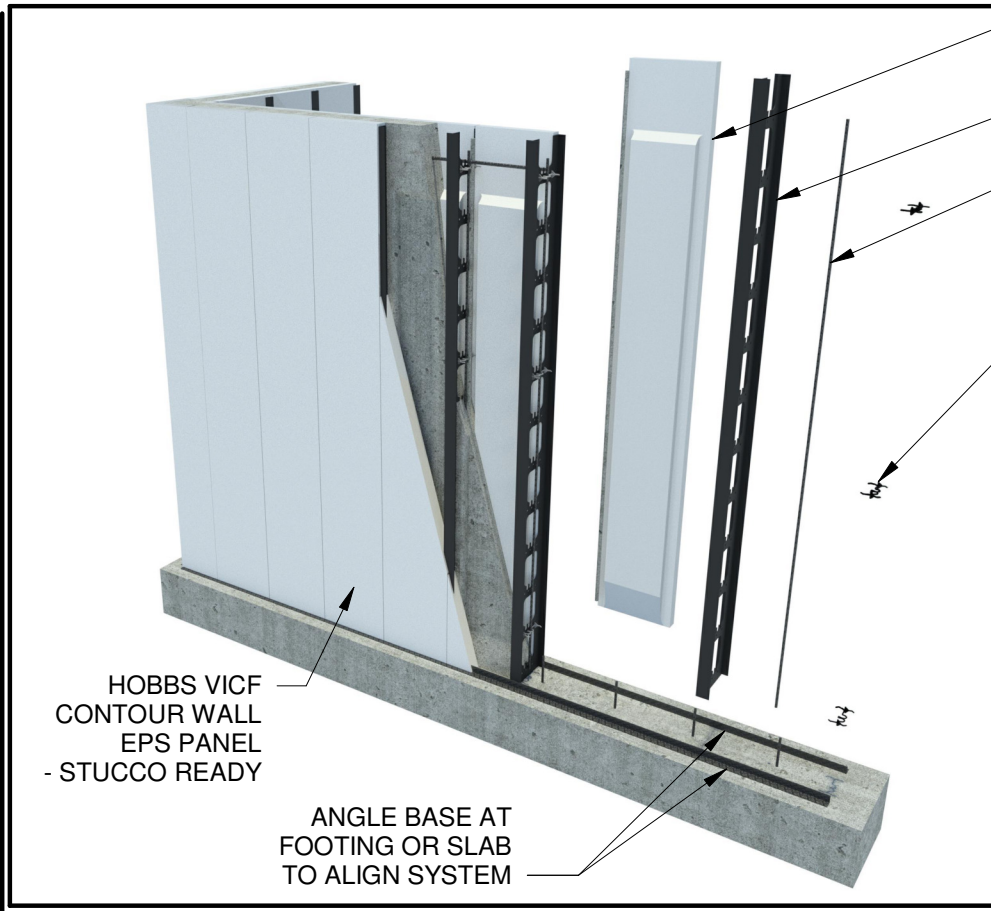


CONTOUR WALL W/ STUCCO READY DESIGN DETAILS



Vertical ICF Wall System

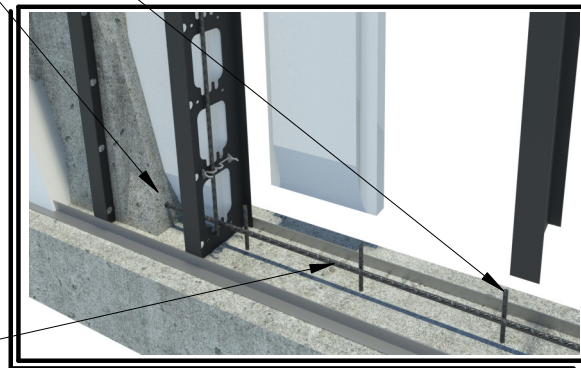
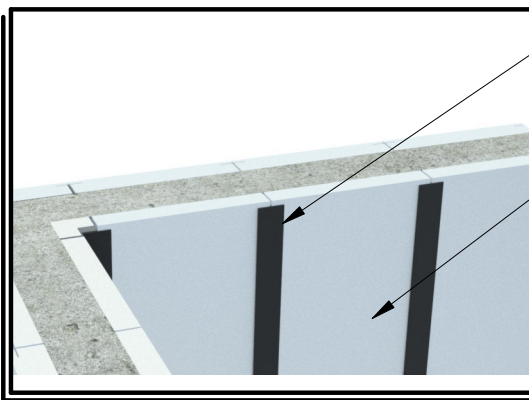
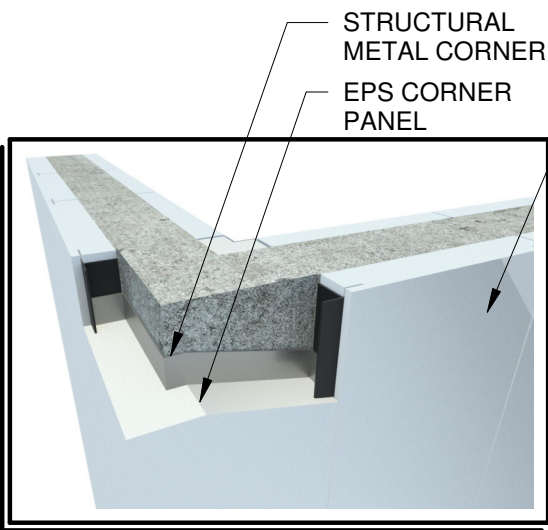
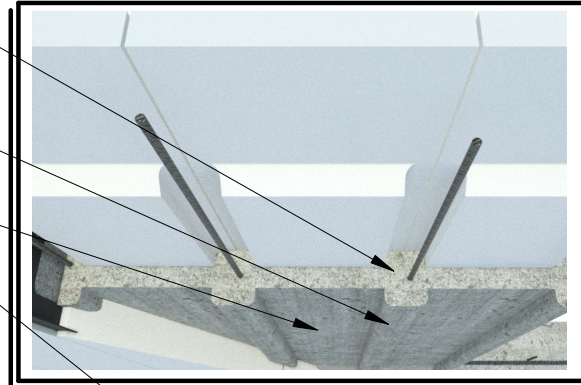
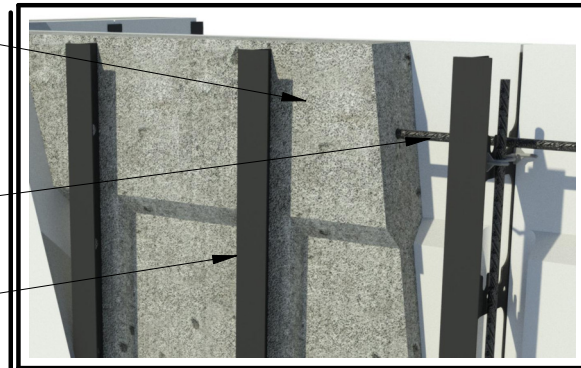
Go Engineered. Go Easy. Go Green.



- HOBBS VICF CONTOUR WALL EPS PANEL TYPE
- FURRING ASSEMBLIES (PVC STUDS)
- VERTICAL BAR
- CONTINUOUS CONCRETE TOP BEAM
- RETAINER CLIPS HOLD EPS PANELS AND VERTICAL REBAR
- HORIZONTAL REBAR AT TOP BEAM
- FURRING ASSEMBLY (PVC STUDS)
- MODIFIED POST AND BEAM STRUCTURAL CORE DESIGN
- CONCRETE COLUMN AT 16" O.C. SPACING WITH VERTICAL REBAR
- CONCRETE WEB
- REBAR DOWELS
- TAPERED BOTTOM BEAM

HOBBS VICF CONTOUR WALL EPS PANEL - STUCCO READY

ANGLE BASE AT FOOTING OR SLAB TO ALIGN SYSTEM



STRUCTURAL METAL CORNER

EPS CORNER PANEL

HOBBS VICF CONTOUR WALL EPS PANEL - STUCCO READY

- EXPOSED FURRING ASSEMBLIES (PVC STUDS) 16" O.C. SPACING
- CONTOUR WALL DESIGN W/ EXPOSED STUD PANEL TYPE ON INTERIOR
- HORIZONTAL REBAR AT BOTTOM BEAM



www.hobbsverticalicf.com



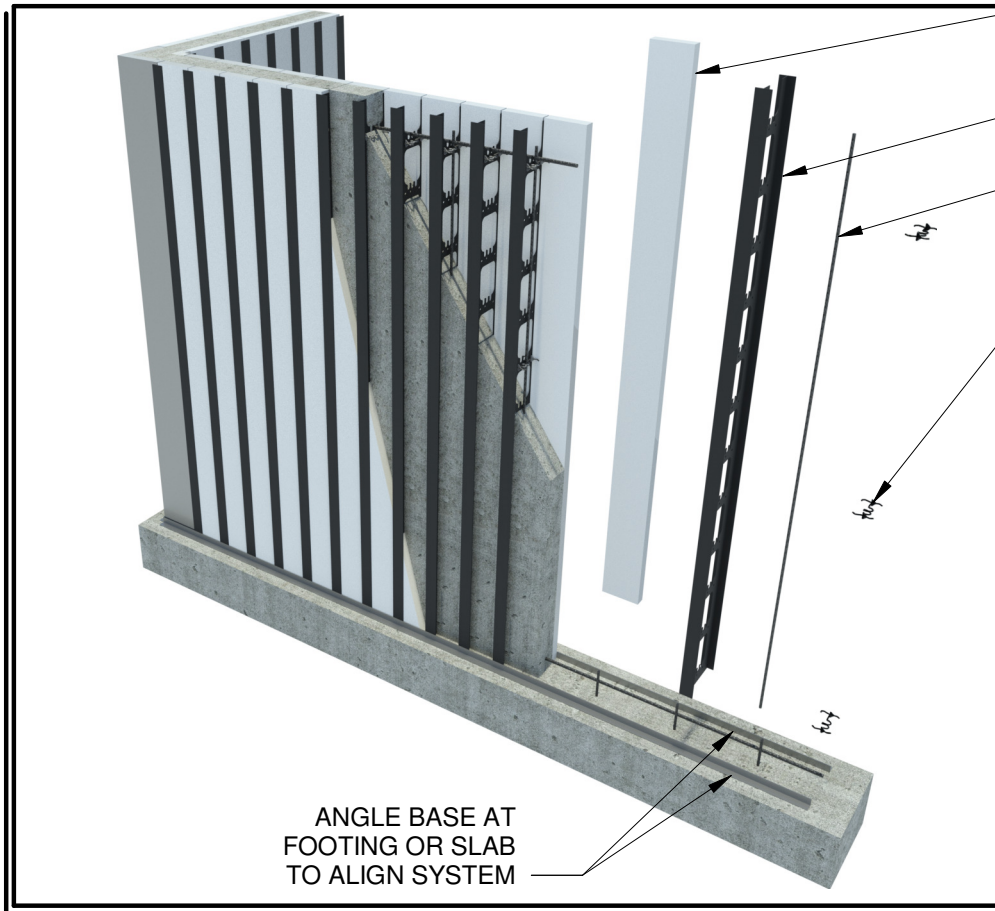
(866) 904-9255

FLAT WALL W/ EXPOSED STUD DESIGN DETAILS



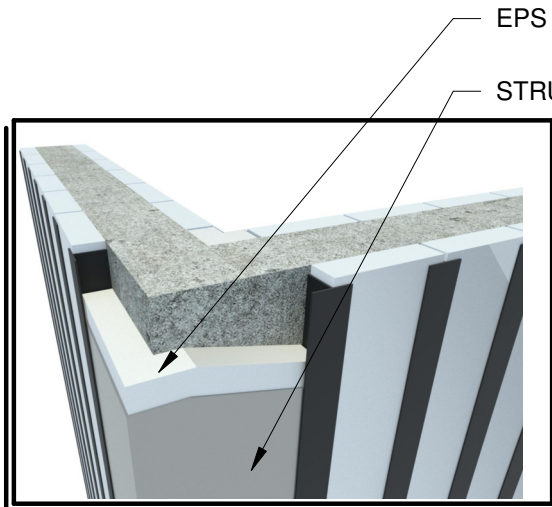
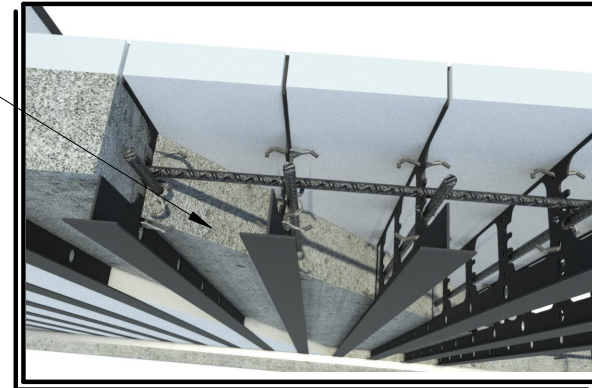
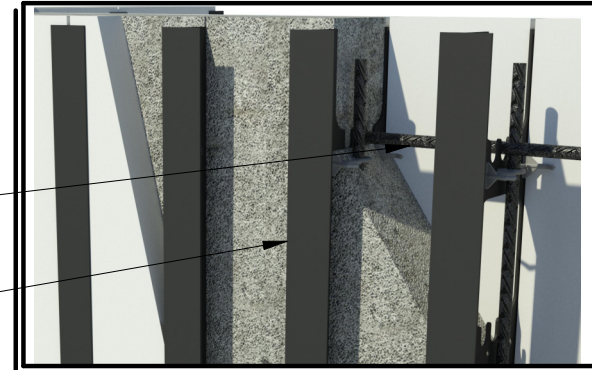
Vertical ICF Wall System

Go Engineered. Go Easy. Go Green.

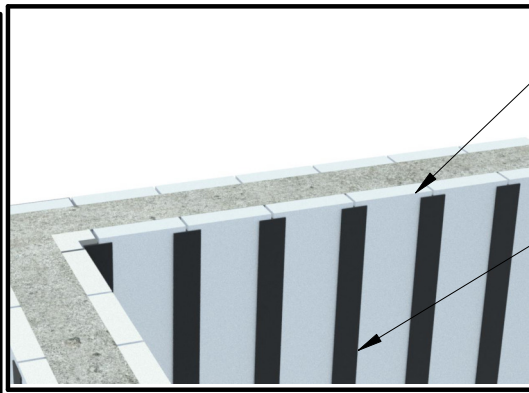


- HOBBS VICF FLATWALL EPS PANEL TYPE
- FURRING ASSEMBLIES (PVC STUDS)
- VERTICAL BAR
- RETAINER CLIP
- HORIZONTAL REBAR AT TOP OF WALL
- FURRING ASSEMBLY (PVC STUDS)
- FLATWALL CONCRETE CORE WITH SYSTEM SPACING AT 8" O.C. & REBAR AT 16" O.C. SPACING

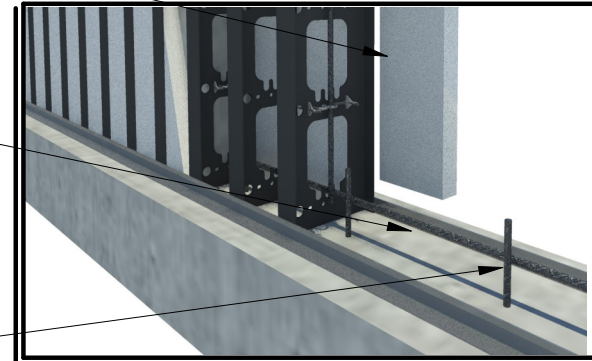
ANGLE BASE AT FOOTING OR SLAB TO ALIGN SYSTEM



- EPS CORNER PANEL
- STRUCTURAL METAL CORNER



- FLAT WALL E.P.S. PANEL
- FLATWALL DESIGN W/ EXPOSED STUD PANEL TYPE
- HORIZONTAL REBAR
- EXPOSED FURRING ASSEMBLIES (PVC STUDS) 8" O.C. SPACING
- REBAR DOWELS



www.hobbsverticalicf.com



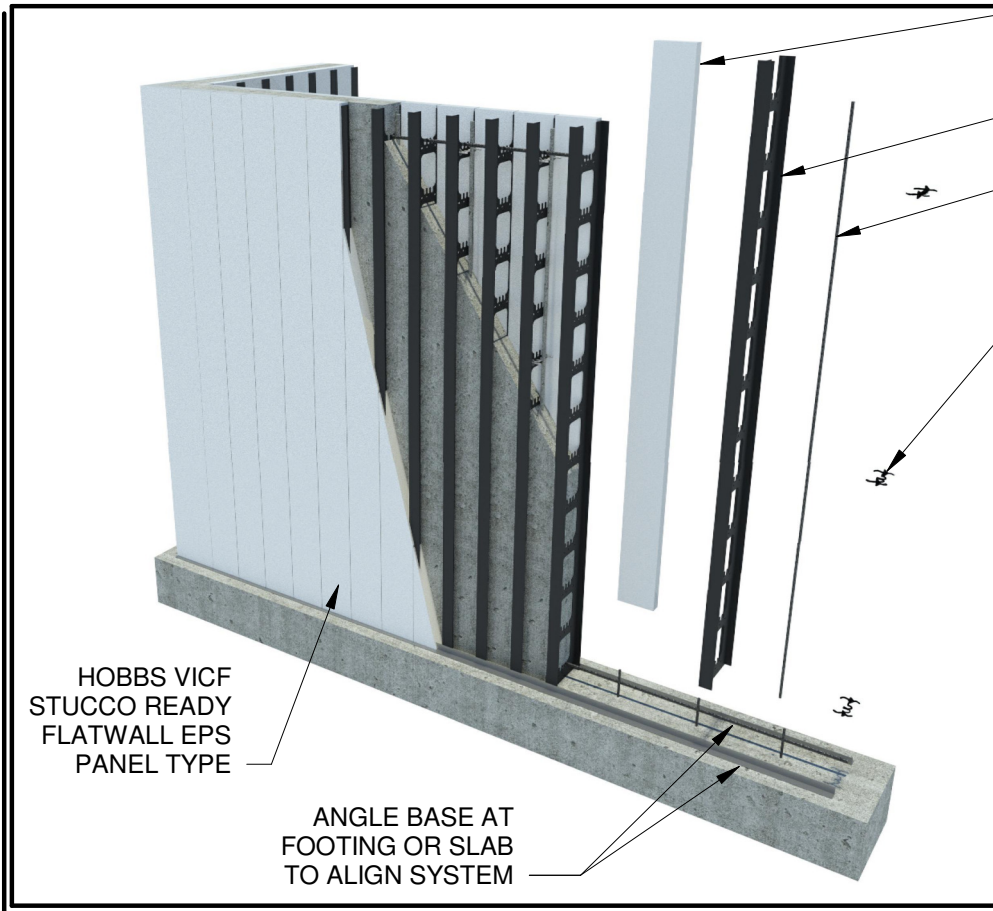
(866) 904-9255

FLATWALL STUCCO READY DESIGN DETAILS



Vertical ICF Wall System

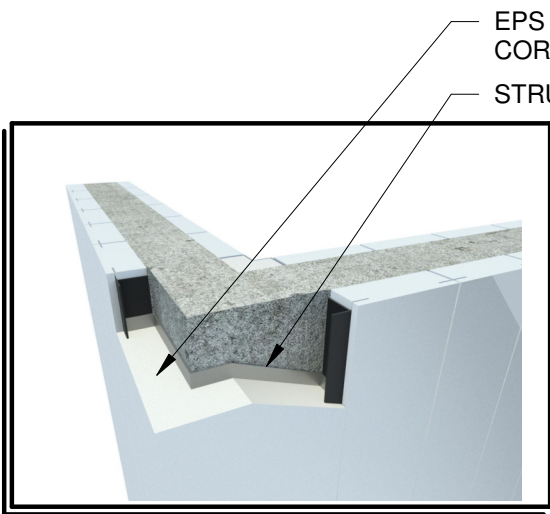
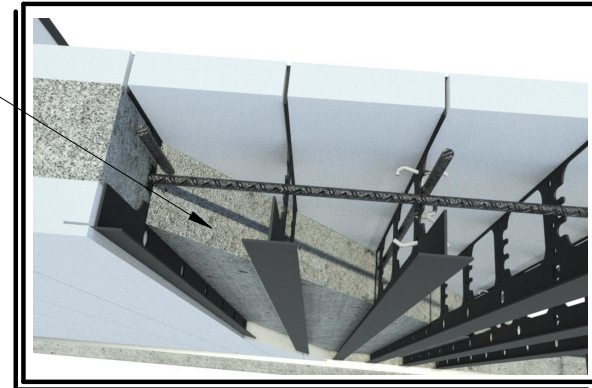
Go Engineered. Go Easy. Go Green.



- HOBBS VICF FLATWALL EPS PANEL TYPE
- FURRING ASSEMBLIES (STUDS)
- VERTICAL BAR
- RETAINER CLIP
- HORIZONTAL REBAR AT TOP BEAM
- FURRING ASSEMBLY (STUDS)
- FLATWALL CONCRETE CORE WITH SYSTEM SPACING AT 8" O.C. & REBAR AT 16" O.C. SPACING

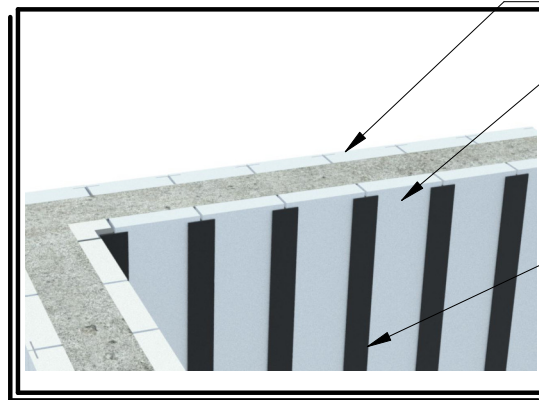
HOBBS VICF STUCCO READY FLATWALL EPS PANEL TYPE

ANGLE BASE AT FOOTING OR SLAB TO ALIGN SYSTEM



EPS STUCCO READY CORNER PANEL

STRUCTURAL METAL CORNER



FLATWALL STUCCO READY E.P.S. PANEL

FLATWALL DESIGN W/ EXPOSED STUD PANEL TYPE

HORIZONTAL REBAR

EXPOSED FURRING ASSEMBLIES (STUDS) 8" O.C. SPACING

HORIZONTAL DOWELS

