

REINFORCED CONCRETE FLOOR SLAB DETAIL @ COLUMN

(EXTERIOR WALL)

GENERAL NOTE: REFER TO ENGINEERING FOR DETAILED PROJECT SPECIFICATIONS



Vertical ICF Wall System

Tell: (515) 473-9255

Fax: (515) 974-4399

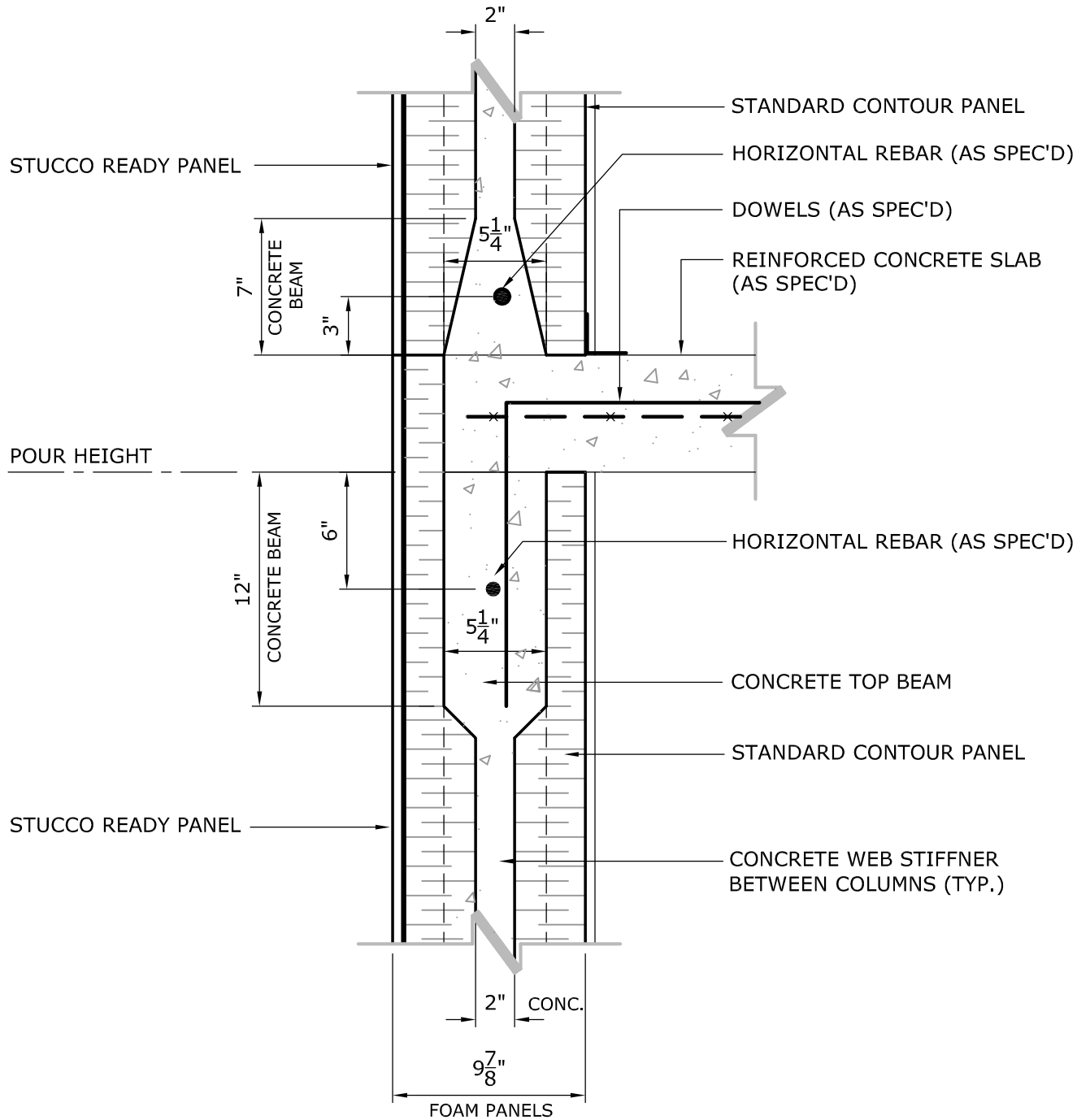
Toll free: 866-904-9255

All drawings and details shall be constructed in accordance with the local building code regulations and construction practices

Design contained herein are protected by copyright, recipient acknowledges contents are property of Hobbs Vertical ICF Wall System, LLC., and shall be used only for construction purposes and not copied, used or reproduced, for any other purposes or projects without written permission from Hobbs ICF Wall System, LLC. all rights reserved. Hobbs ICF Wall System, LLC. 2009. Hobbs ICF Wall System reserves the right to make changes to the drawings/information shown without notice.

REINFORCED CONCRETE FLOOR SLAB DETAIL @ COLUMN

Date: 05/08/2009	Drawn By: GJH	Scale: 1 1/2" = 1'-0"
Revision #: 0	DWG #:	
Revision Date:		



REINFORCED CONCRETE FLOOR SLAB DETAIL @ WEB

(EXTERIOR WALL)

GENERAL NOTE: REFER TO ENGINEERING FOR DETAILED PROJECT SPECIFICATIONS



Vertical ICF Wall System

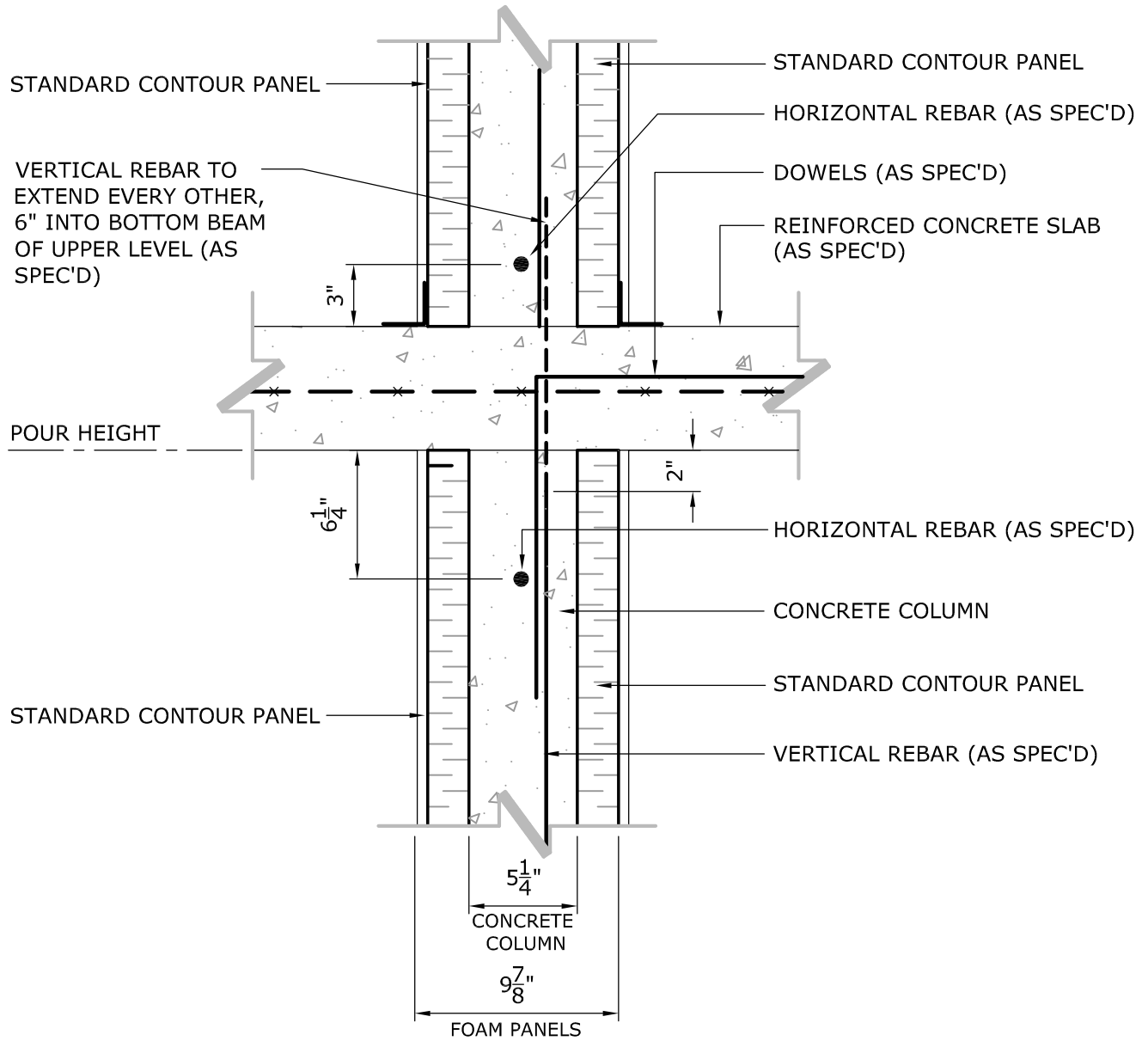
Tell: (515) 473-9255
 Fax: (515) 974-4399
 Toll free: 866-904-9255

All drawings and details shall be constructed in accordance with the local building code regulations and construction practices

Design contained herein are protected by copyright, recipient acknowledges contents are property of Hobbs Vertical ICF Wall System, LLC., and shall be used only for construction purposes and not copied, used or reproduced, for any other purposes or projects without written permission from Hobbs ICF Wall System, LLC. all rights reserved. Hobbs ICF Wall System, LLC. 2009. Hobbs ICF Wall System reserves the right to make changes to the drawings/information shown without notice.

REINFORCED CONCRETE FLOOR SLAB DETAIL @ WEB

Date: 05/08/2009	Drawn By: GJH	Scale: 1 1/2" = 1'-0"
Revision #: 0	DWG #:	
Revision Date:		



REINFORCED CONCRETE FLOOR SLAB DETAIL @ COLUMN

(INTERIOR WALL)

GENERAL NOTE: REFER TO ENGINEERING FOR DETAILED PROJECT SPECIFICATIONS



Vertical ICF Wall System

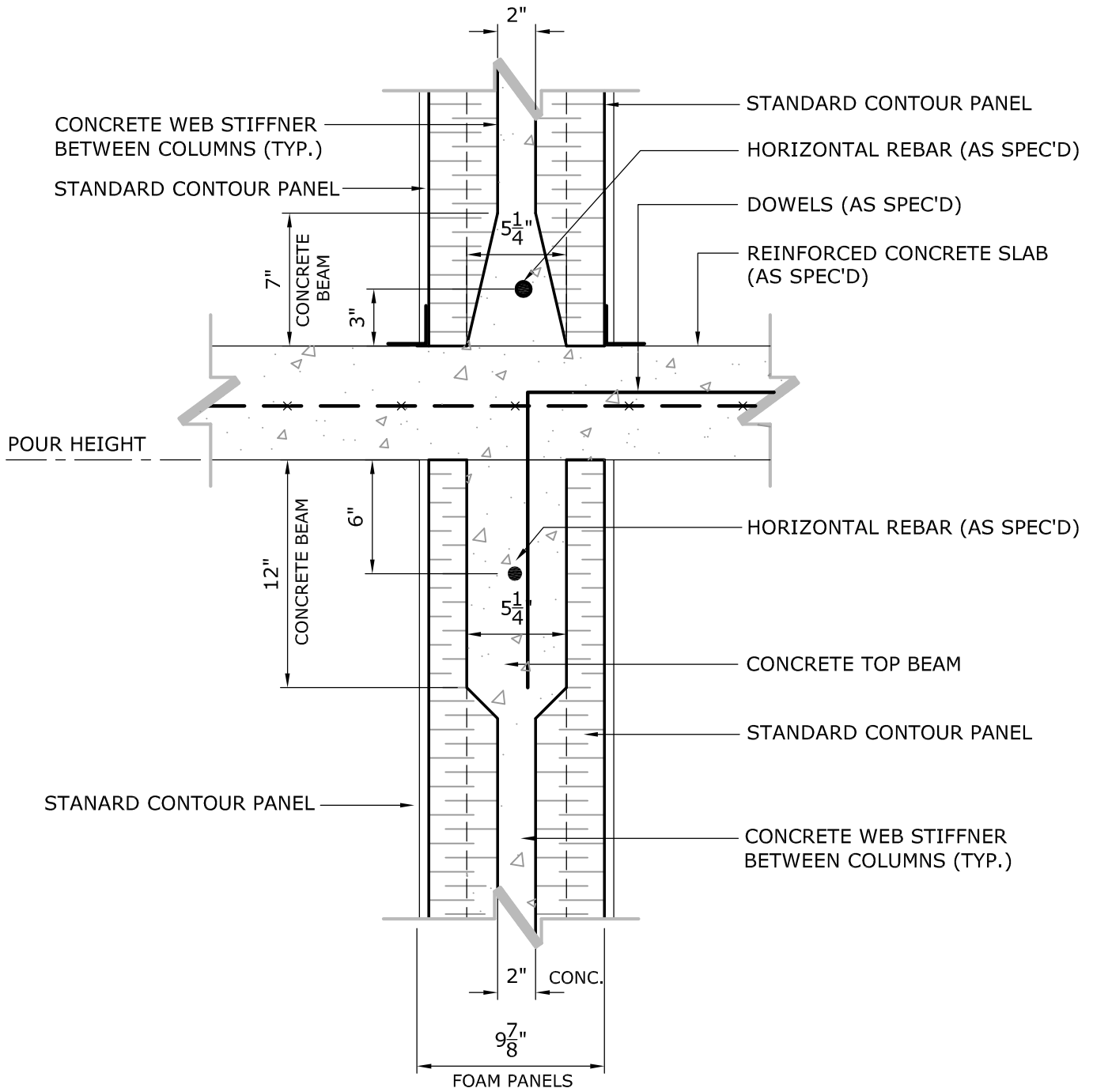
Tell: (515) 473-9255
 Fax: (515) 974-4399
 Toll free: 866-904-9255

All drawings and details shall be constructed in accordance with the local building code regulations and construction practices

Design contained herein are protected by copyright, recipient acknowledges contents are property of Hobbs Vertical ICF Wall System, LLC., and shall be used only for construction purposes and not copied, used or reproduced, for any other purposes or projects without written permission from Hobbs ICF Wall System, LLC. all rights reserved. Hobbs ICF Wall System, LLC. 2009. Hobbs ICF Wall System reserves the right to make changes to the drawings/information shown without notice.

REINFORCED CONCRETE FLOOR SLAB DETAIL @ COLUMN

Date: 05/08/2009	Drawn By: GJH	Scale: 1 1/2" = 1'-0"
Revision #: 0	DWG #:	
Revision Date:		



REINFORCED CONCRETE FLOOR SLAB DETAIL @ WEB

(INTERIOR WALL)

GENERAL NOTE: REFER TO ENGINEERING FOR DETAILED PROJECT SPECIFICATIONS

HOBBS
Vertical ICF Wall System

Tell: (515) 473-9255
Fax: (515) 974-4399
Toll free: 866-904-9255

All drawings and details shall be constructed in accordance with the local building code regulations and construction practices

Design contained herein are protected by copyright, recipient acknowledges contents are property of Hobbs Vertical ICF Wall System, LLC, and shall be used only for construction purposes and not copied, used or reproduced, for any other purposes or projects without written permission from Hobbs ICF Wall System, LLC. 2009. Hobbs ICF Wall System reserves the right to make changes to the drawings/information shown without notice.

REINFORCED CONCRETE FLOOR SLAB DETAIL @ WEB

Date: 05/08/2009	Drawn By: GJH	Scale: 1 1/2" = 1'-0"
Revision #: 0		DWG #:
Revision Date:		