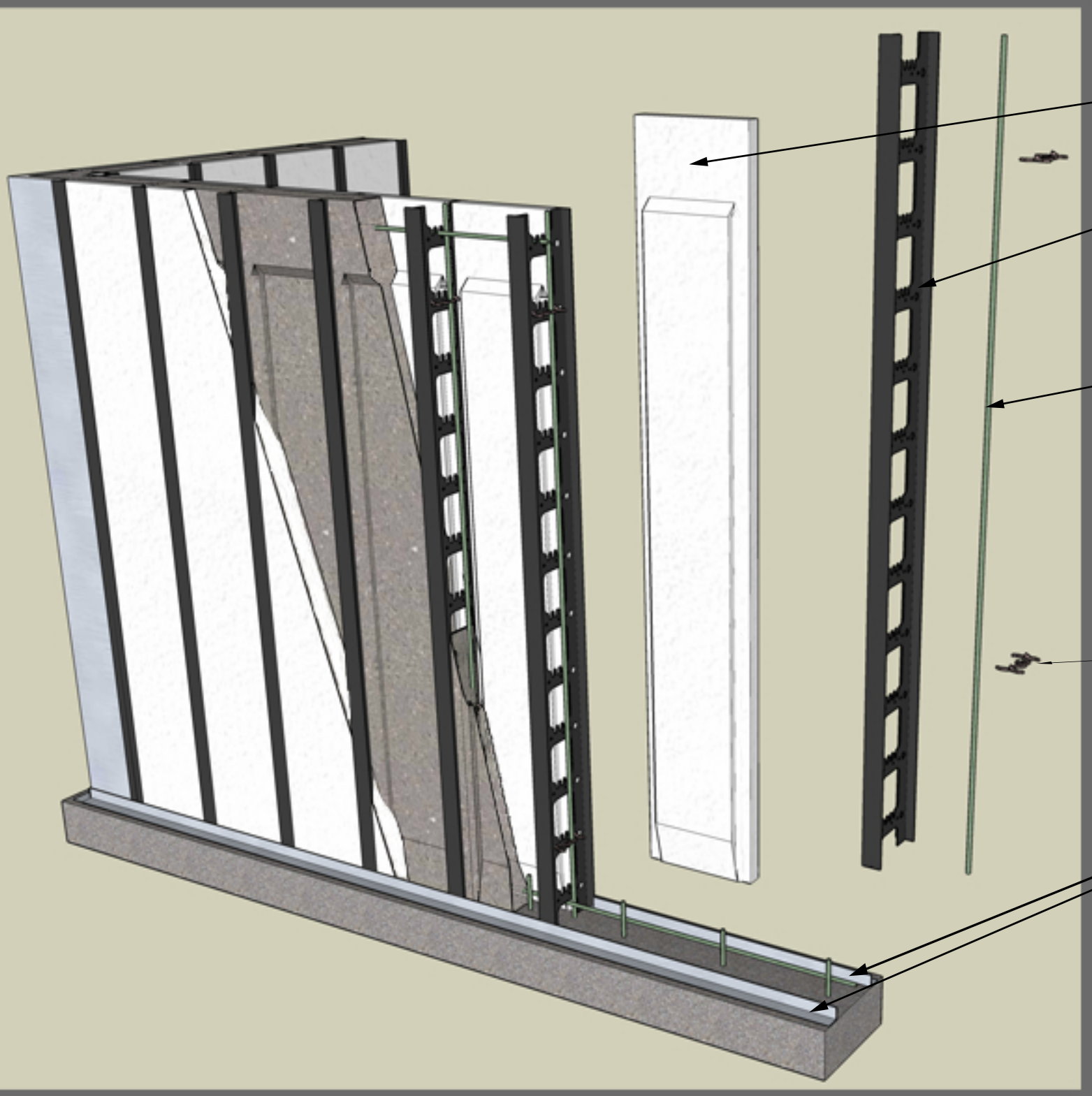


CONTOUR WALL ("CW") DESIGN DETAILS



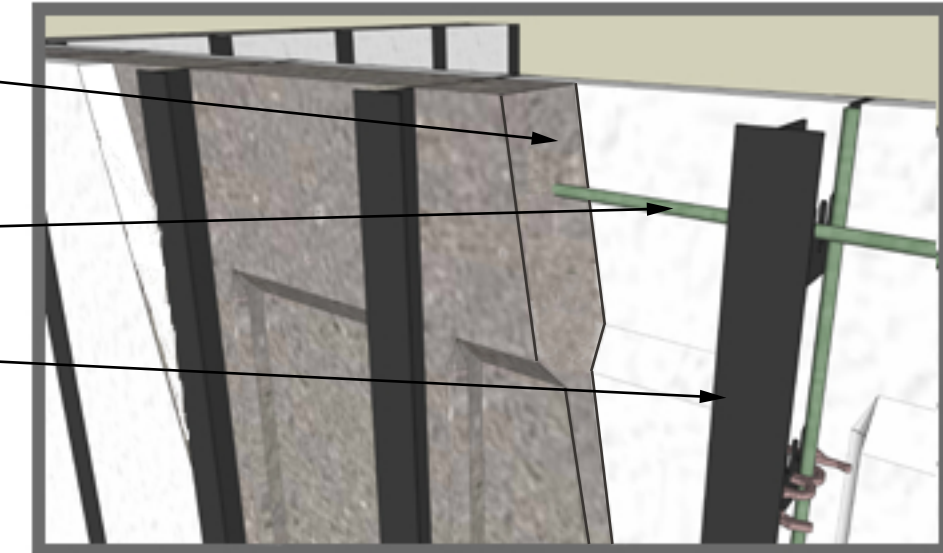
HOBBS VICF CONTOUR WALL DESIGN (E.P.S.) PANEL

FURRING ASSEMBLIES (STUDS)

VERTICAL REBAR

RETAINER CLIP

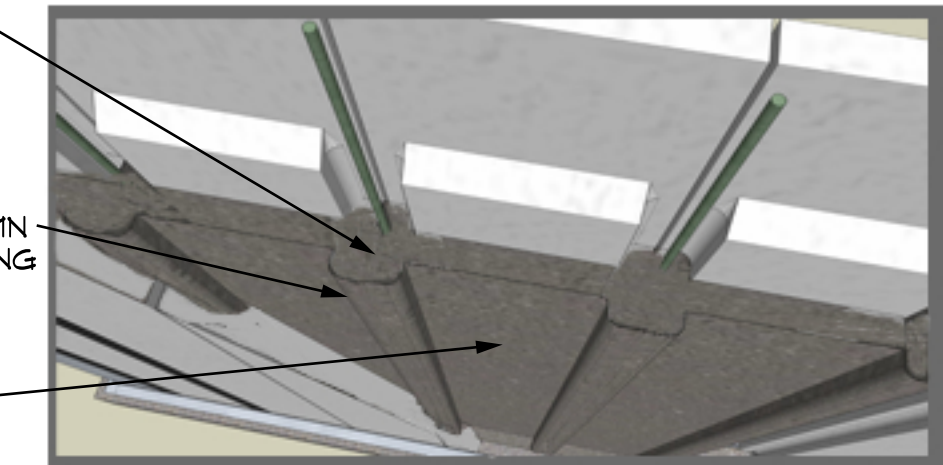
ANGLE BASE TYPICAL ON BOTH SIDES OF WALL AT FTG. OR SLAB



CONCRETE TOP BEAM

HORIZONTAL REBAR AT TOP BEAM

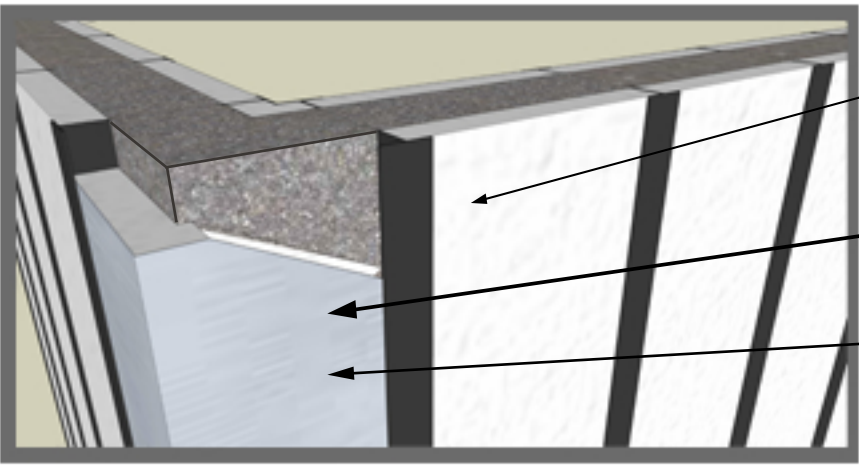
EXPOSED FURRING ASSEMBLY (STUDS)



MODIFIED POST AND BEAM STRUCTURAL CORE DESIGN

CONCRETE COLUMN AT 16" O.C. SPACING WITH VERTICAL REBAR

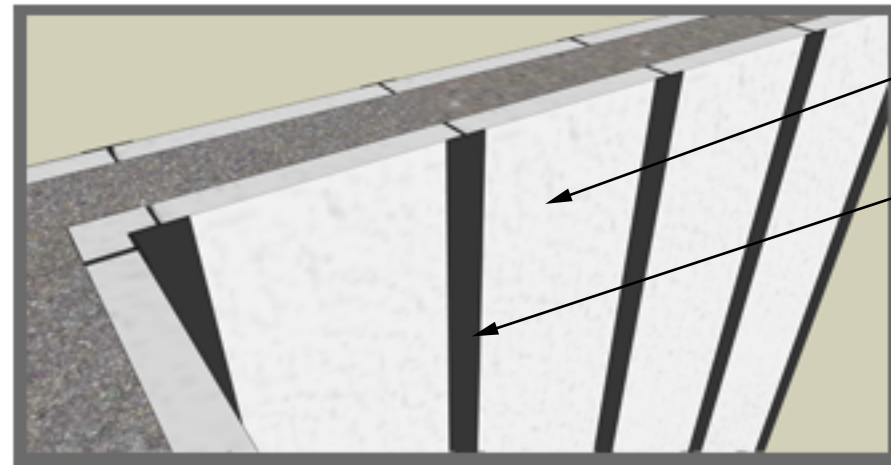
CONCRETE WEB



HOBBS VICF CONTOUR WALL DESIGN (E.P.S.) PANEL

STRUCTURAL METAL CORNER

HOBBS VICF CORNER

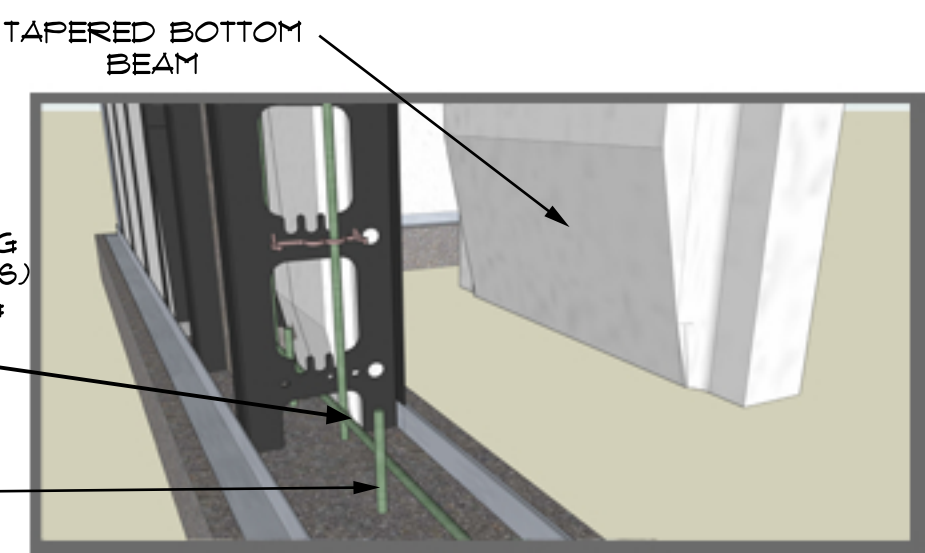


HOBBS VICF CONTOUR WALL DESIGN (E.P.S.) PANEL

EXPOSED FURRING ASSEMBLIES (STUDS) 16" O.C. SPACING

HORIZONTAL REBAR AT BOTTOM BEAM

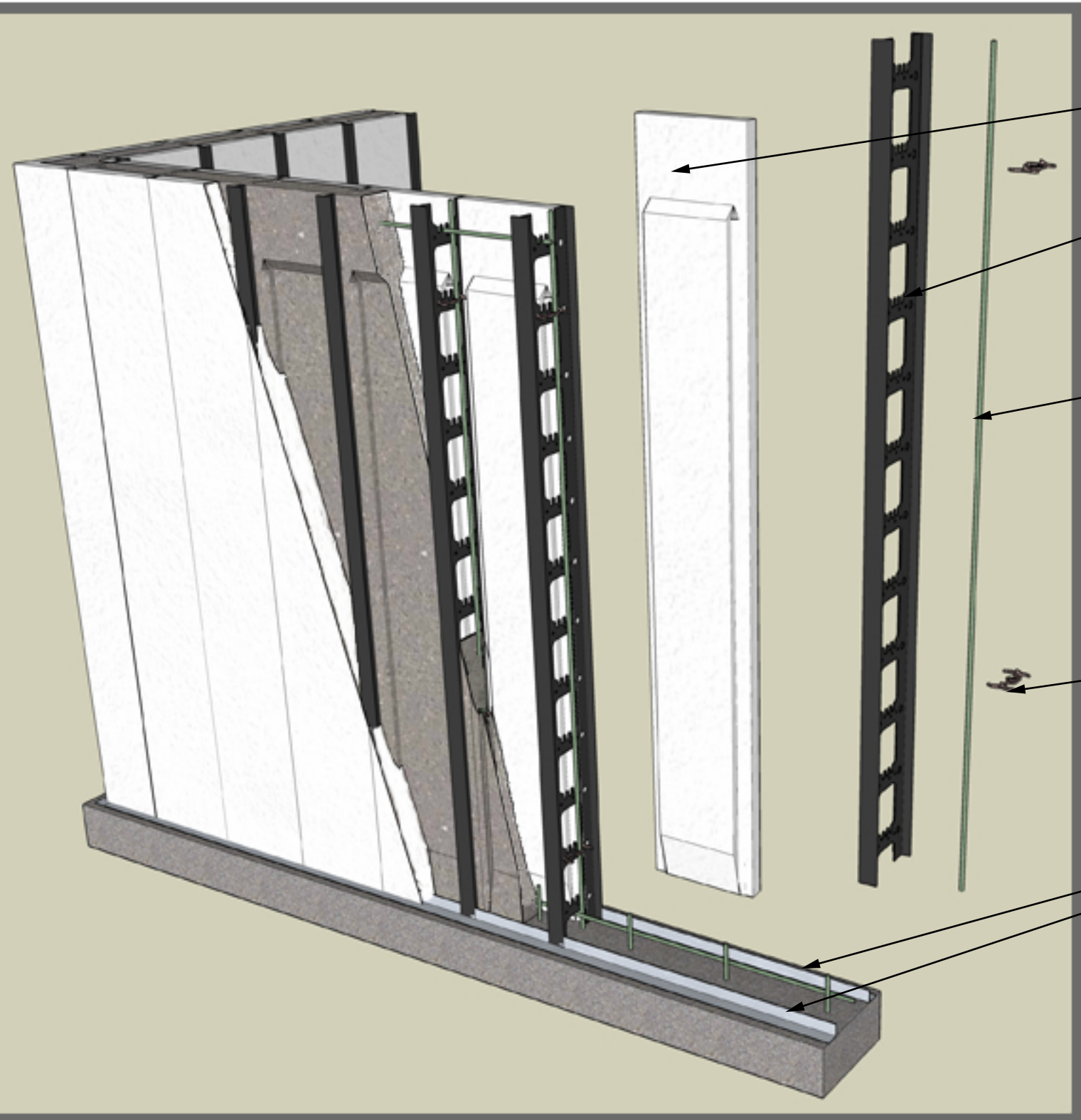
REBAR DOWELS



TAPERED BOTTOM BEAM

Go Engineered. Go Easy. Go Green.

CONTOUR WALL-STUCCO READY ("CW-SR") DESIGN DETAILS



HOBBS VICF CONTOUR WALL DESIGN (E.P.S.) PANEL

FURRING ASSEMBLIES (STUDS)

VERTICAL REBAR

RETAINER CLIP

ANGLE BASE TYPICAL ON BOTH SIDES OF WALL AT FTG. OR SLAB

CONCRETE TOP BEAM

HORIZONTAL REBAR AT TOP BEAM

FURRING ASSEMBLY (STUDS)

MODIFIED POST AND BEAM STRUCTURAL CORE DESIGN

CONCRETE COLUMN AT 16" O.C. SPACING WITH VERTICAL REBAR

CONCRETE WEB

TAPERED BOTTOM BEAM

HOBBS VICF CONTOUR WALL-STUCCO READY DESIGN (E.P.S.) PANEL

STRUCTURAL METAL CORNER

HOBBS VICF STUCCO READY CORNER

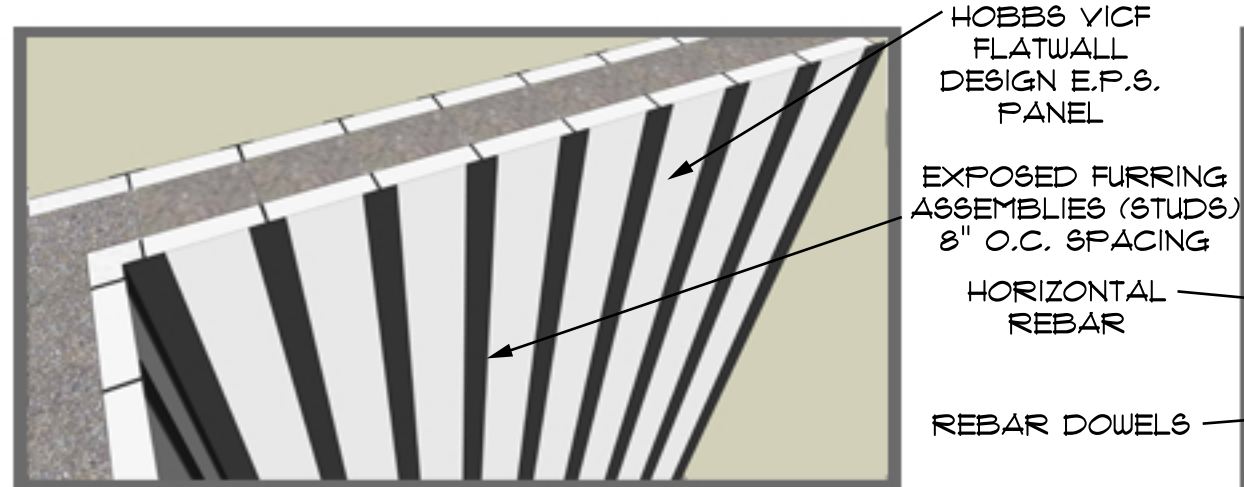
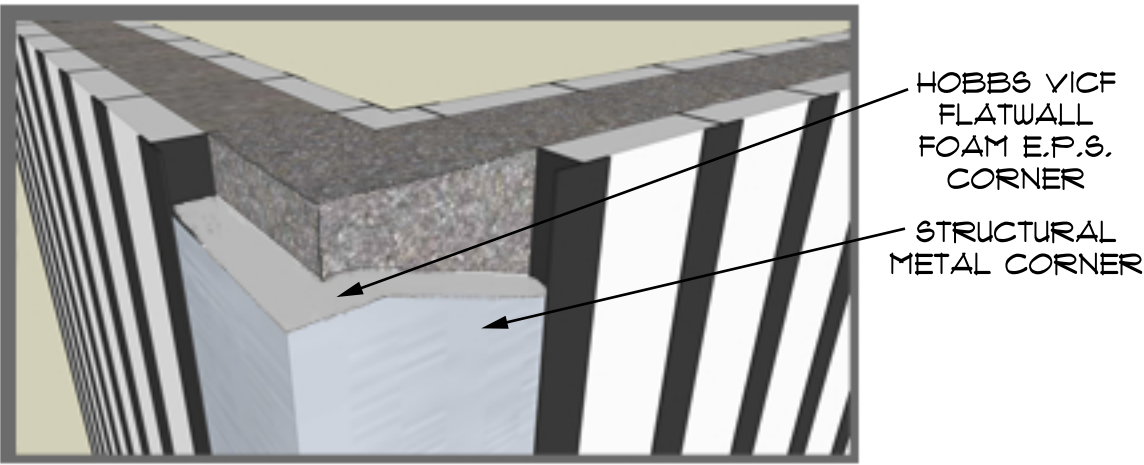
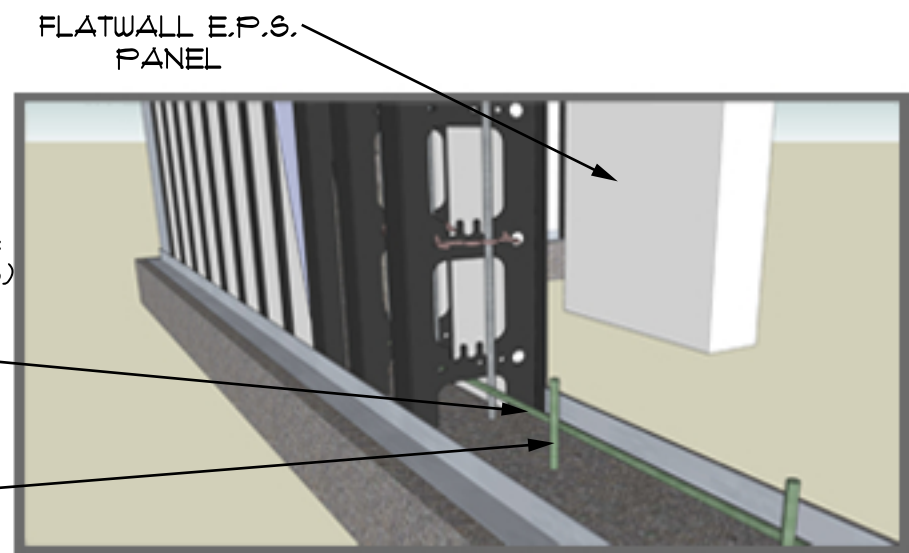
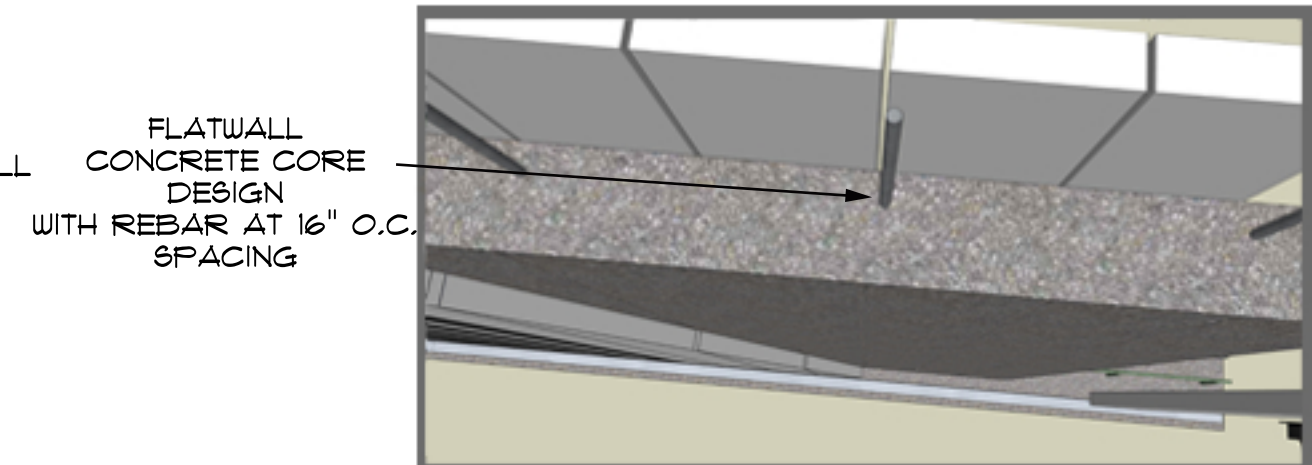
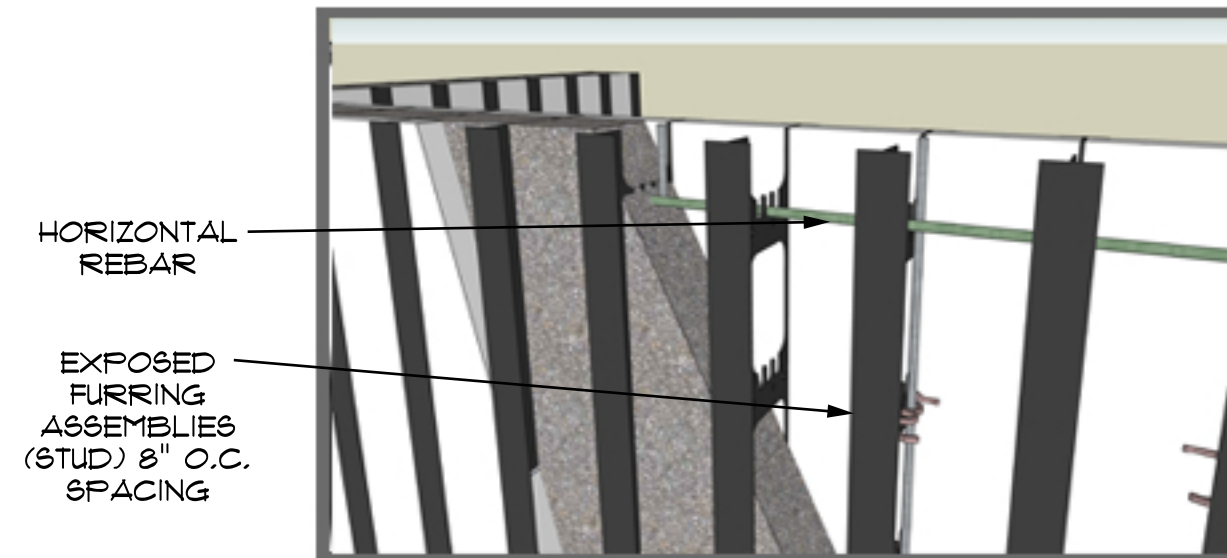
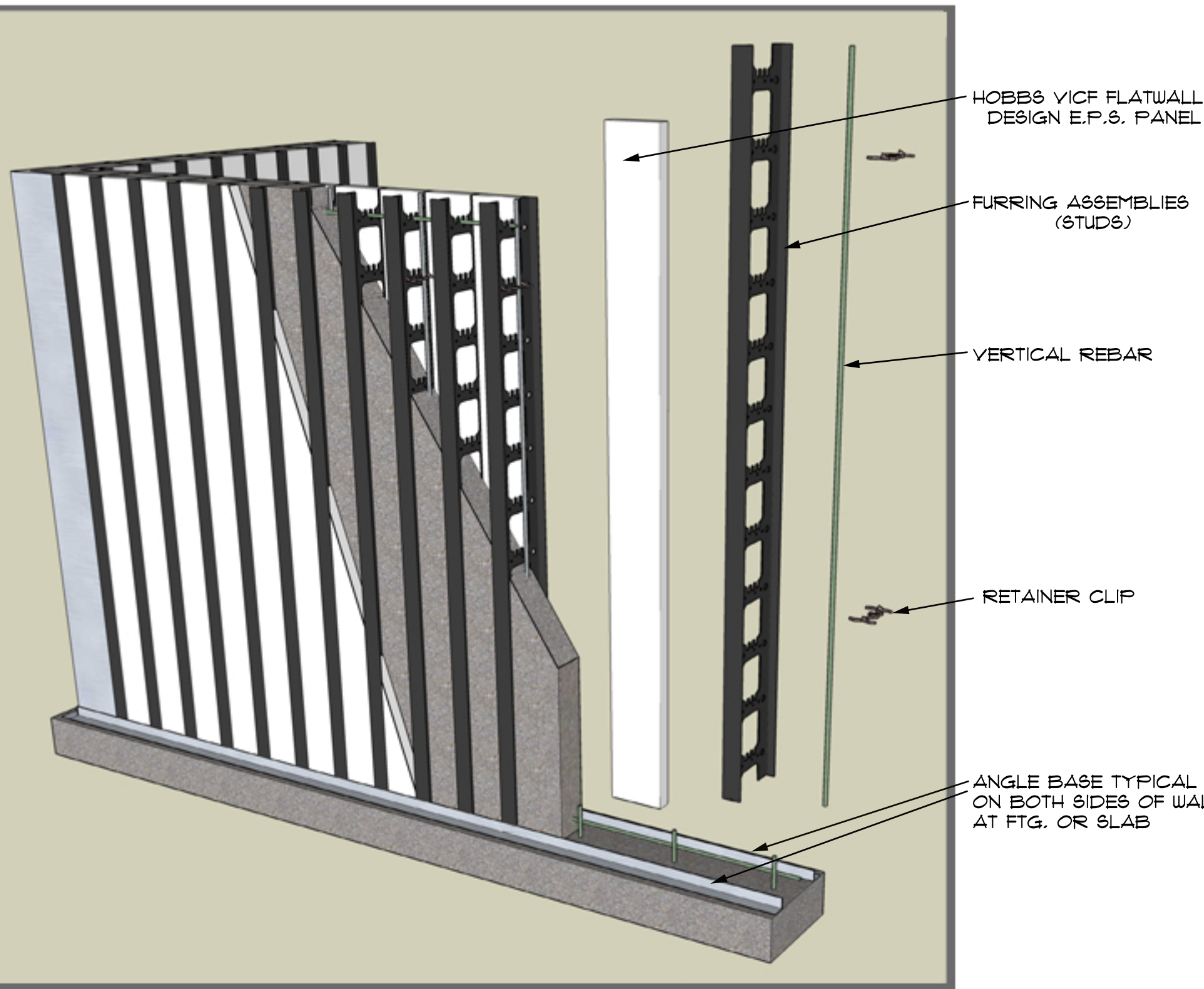
HOBBS VICF CONTOUR WALL DESIGN (E.P.S.) PANEL

EXPOSED FURRING ASSEMBLIES (STUDS) 16" O.C. SPACING

HORIZONTAL REBAR AT BOTTOM BEAM

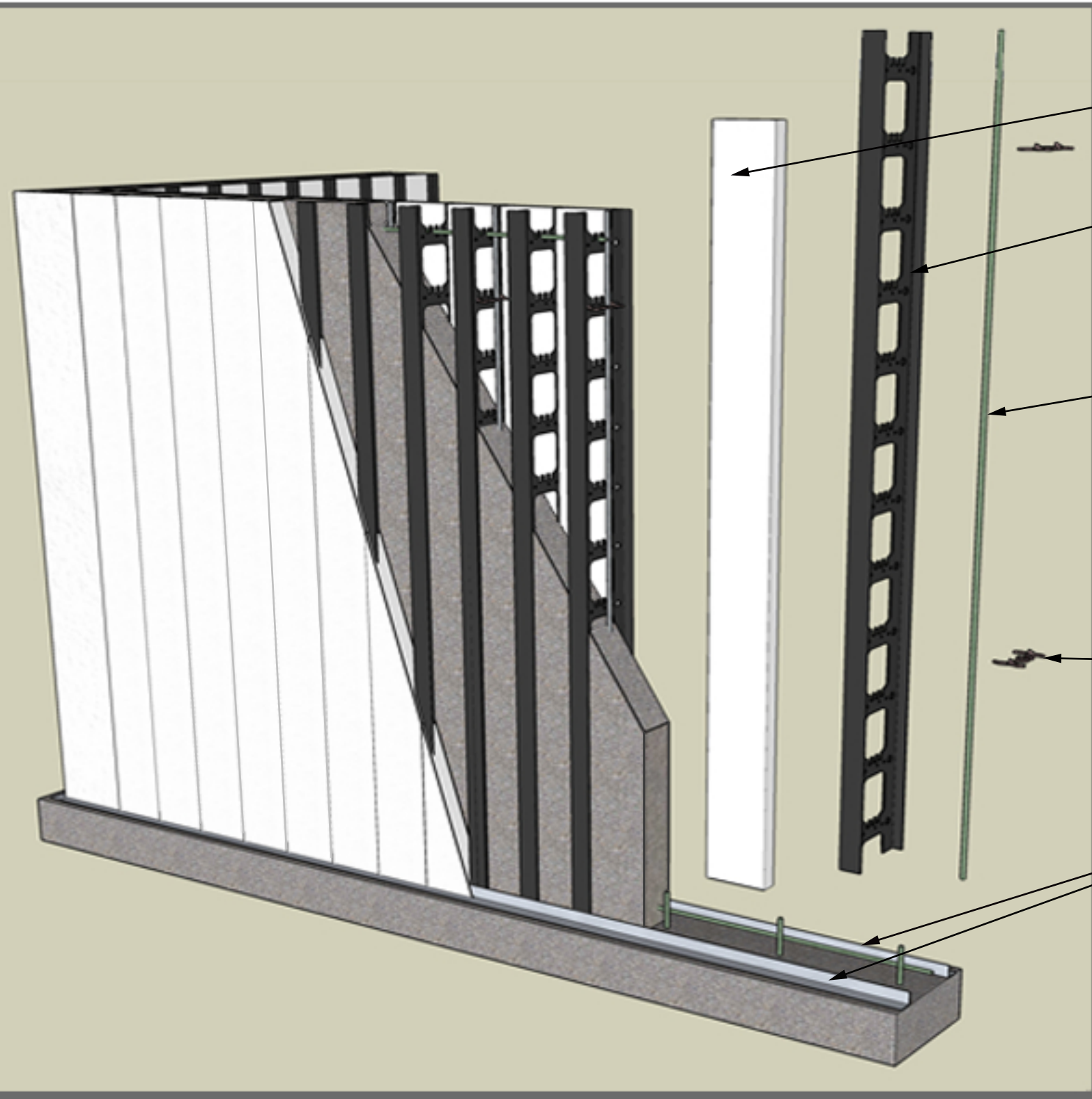
REBAR DOWELS

FLATWALL ("FW") DESIGN DETAILS



Go Engineered. Go Easy. Go Green.

FLATWALL-STUCCO READY ("FW-SR") DESIGN DETAILS



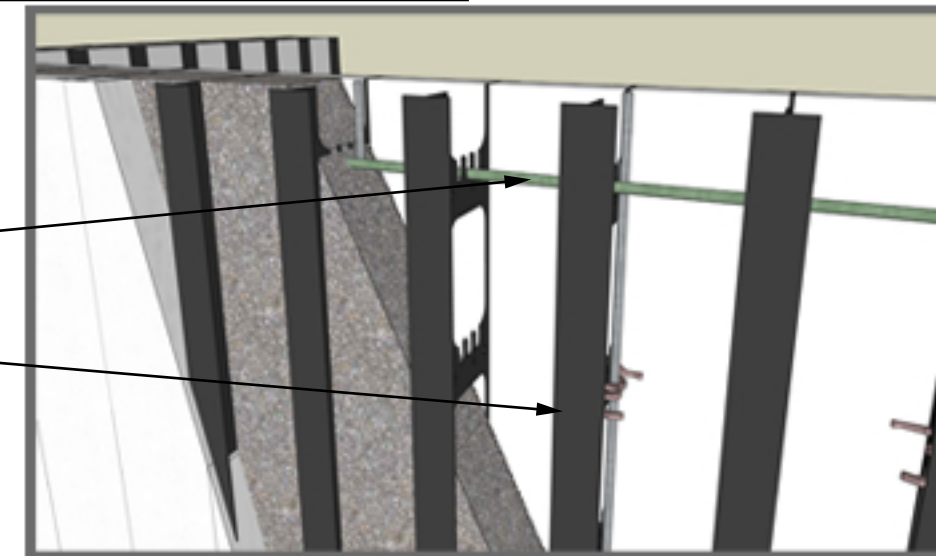
HOBBS VICF FLATWALL
DESIGN E.P.S. PANEL

FURRING ASSEMBLIES
(STUDS)

VERTICAL REBAR

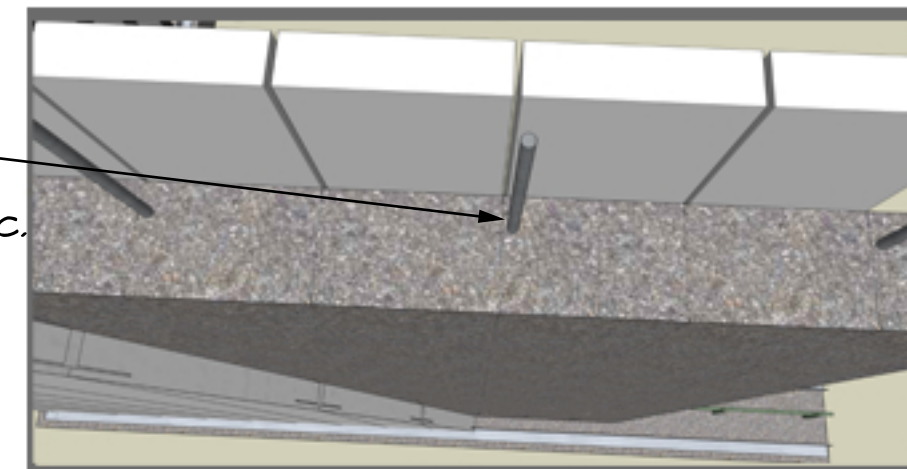
RETAINER CLIP

ANGLE BASE TYPICAL
ON BOTH SIDES OF WALL
AT FTG. OR SLAB



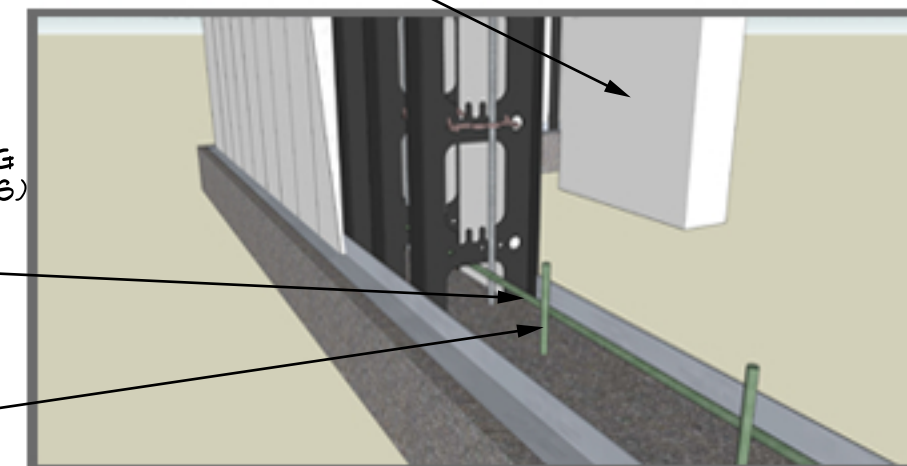
HORIZONTAL
REBAR

FURRING
ASSEMBLIES
(STUD) 8" O.C.
SPACING



FLATWALL
CONCRETE CORE
DESIGN
WITH REBAR AT 16" O.C.
SPACING

FLATWALL E.P.S.
PANEL

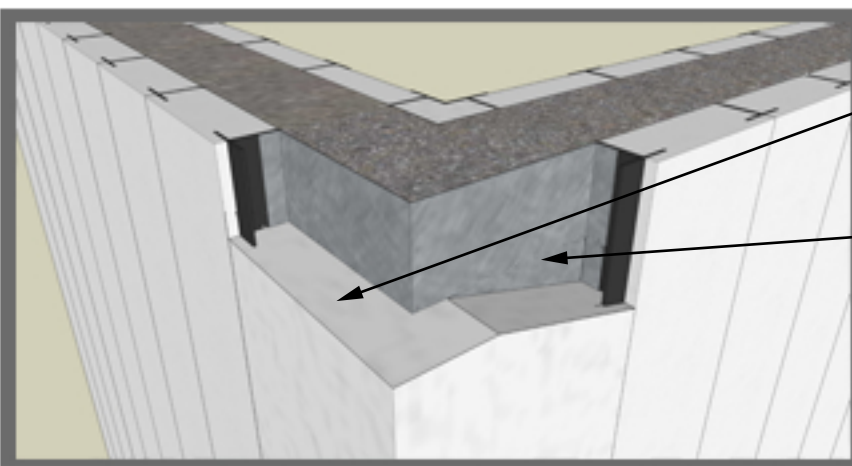


HOBBS VICF
FLATWALL
DESIGN E.P.S.
PANEL

EXPOSED FURRING
ASSEMBLIES (STUDS)
8" O.C. SPACING

HORIZONTAL
REBAR

REBAR DOWELS



HOBBS VICF
FOAM E.P.S.
CORNER

STRUCTURAL
METAL CORNER

